




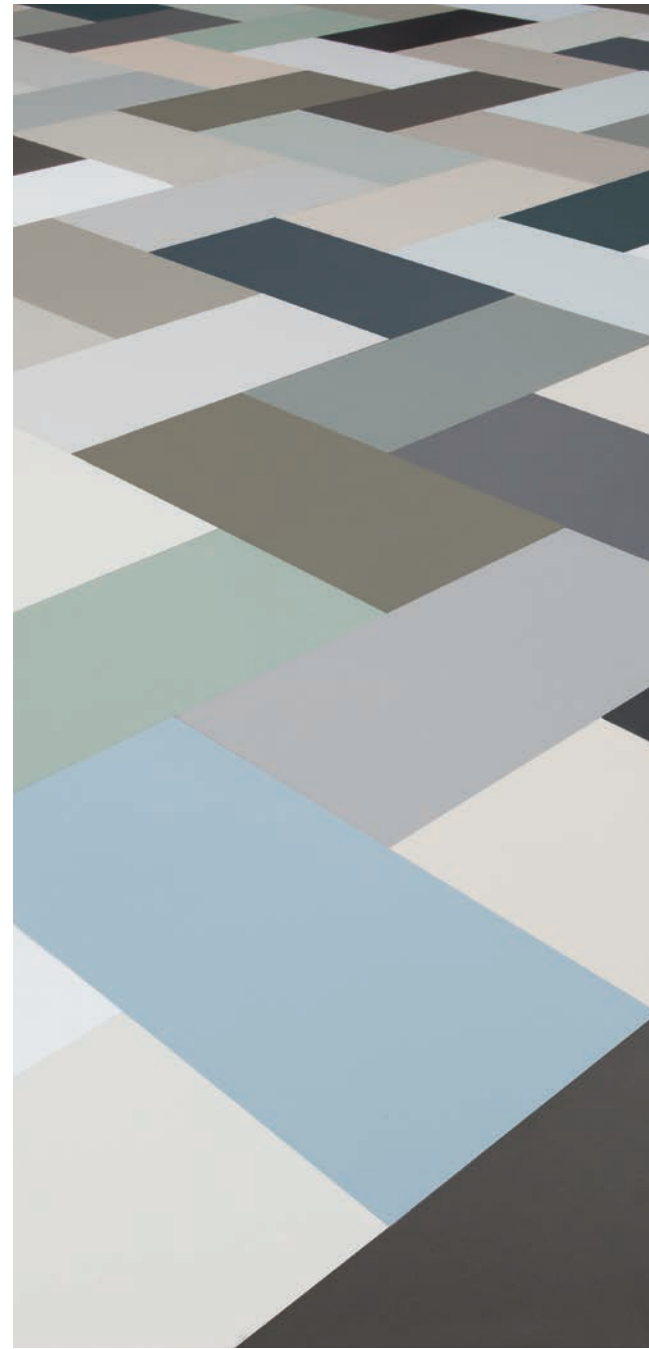
Your personal style statement™

Your kitchen should reflect your life, your style, and your discerning attention to detail. Bring your ideas to life with the beautiful palette of designer-inspired color and refined collection of doors from the Diamond® Edge™ Series.



FASHION. FIT. FINISH...

You've never seen color delivered so beautifully. Fashion-inspired paints and specialty finishes are applied to doors and drawers with scrupulous attention to detail - all for you - fit to the specifications your space requires. One touch and you'll agree - a finish never felt so fine.



...FORM.

Options abound. In addition to the standard full overlay construction, all 8 Edge Series door styles are available in inset and beaded inset when a furniture look is desired.



FULL OVERLAY



INSET



BEADED INSET



BROOKS

- 5-Piece solid reverse raised panel mitered door
- Available in Alder, Cherry, Maple, Quartersawn Oak and Rustic Alder
- Full overlay, inset and beaded inset available; drawer fronts may vary
- Door edge profile option: #12



FULL OVERLAY
5-Piece Drawer Front

FULL OVERLAY
Slab Drawer Front

INSET
Slab Drawer Front

BEADED INSET
Slab Drawer Front



DAXTON

- 5-Piece solid raised panel door
- Available in Alder, Cherry, Maple, Quartersawn Oak and Rustic Alder
- Full overlay, inset and beaded inset available; drawer fronts may vary
- Door edge profile options: #12



FULL OVERLAY
5-Piece Drawer Front

FULL OVERLAY
Slab Drawer Front

INSET
Slab Drawer Front

BEADED INSET
Slab Drawer Front



GUNTHER

- 5-Piece solid reverse raised panel door
- Available in Alder, Cherry, Maple, Quartersawn Oak and Rustic Alder
- Full overlay, inset and beaded inset available; drawer fronts may vary
- Door edge profile options: #10, #12, #14, #17, #18,* #27

*Not available on inset or beaded inset.





KARIS

- 5-Piece solid reverse raised panel door
- Available in Alder, Cherry, Maple, Quartersawn Oak and Rustic Alder
- Full overlay, inset and beaded inset available; drawer fronts may vary
- Door edge profile options: #10, #12, #14, #17, #18,* #27

*Not available on inset or beaded inset.





LANGLEY

- 5-Piece solid reverse raised panel door with onlay moulding
- Available in Alder, Cherry, Maple, Quartersawn Oak and Rustic Alder
- Full overlay, inset and beaded inset available; drawer fronts may vary
- Door edge profile options: #10, #12, #14, #17, #18,* #27

*Not available on inset or beaded inset.





SHONA

- 5-Piece solid raised panel door
- Available in Alder, Cherry, Maple, Quartersawn Oak and Rustic Alder
- Full overlay, inset and beaded inset available; drawer fronts may vary
- Door edge profile options: #10, #12, #14, #17, #27





TACKETT

- 5-Piece solid reverse raised panel door
- Available in Alder, Cherry, Maple, Quartersawn Oak and Rustic Alder
- Full overlay, inset and beaded inset available; drawer fronts may vary
- Door edge profile options: #10, #12, #14, #17, #18,* #27

*Not available on inset or beaded inset.





VESTA

- 5-Piece solid raised panel mitered door
- Available in Alder, Cherry, Maple, Quartersawn Oak and Rustic Alder
- Full overlay, inset and beaded inset available; drawer fronts may vary
- Door edge profile options: #10, #12, #14, #17, #18, #27





DETAILS MAKE THE DIFFERENCE.

Every Edge™ Series door style offers several outside edge profiles to tailor your look. It's amazing how seemingly small changes make such a drastic difference in the appearance of a door and drawer. From simple and straight to traditionally detailed, check which options are available on the styles you love and select the shape that suits your vision.

OUTSIDE EDGE DOOR/DRAWER PROFILE OPTIONS



PROFILE #10



PROFILE #12



PROFILE #14



PROFILE #17



PROFILE #18

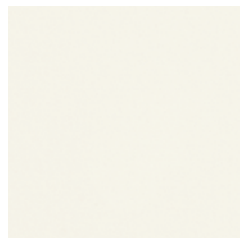


PROFILE #27

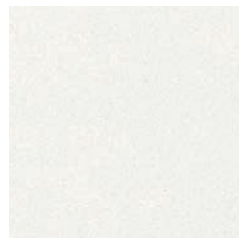


PAINTS*

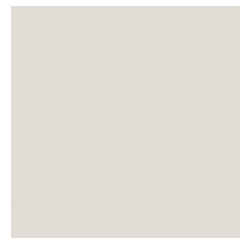
Available on maple



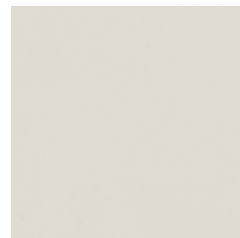
Extra White



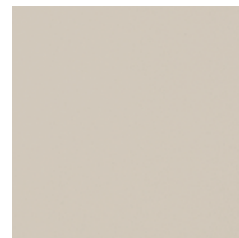
Sterling White



Icy Avalanche



Agreeable Gray



Jogging Path



Sea Salt



Escape Gray



Coastal Plain



Retreat



Eclipse



Mindful Gray



Pure Linen



Coconut



Egret



Soft Glow



Cloud



Stone Trail



Peppercorn



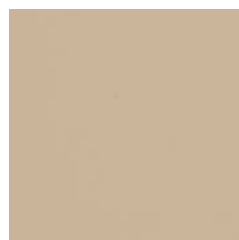
Urbane Bronze



Forest Floor



Buff



Tawny Owl



Living Greige



Waterbury Clay



Foothills



North Star



Interesting Aqua



Maritime



Abyss



Black

PENNEDED GLAZES FOR PAINTS*

Shown on Coconut, available on most paints. See your designer for details.



Meringue
m



Nougat
m



Toasted Almond
m



Amaretto Crème
m



Slate
m



Smoked Caviar
m

BRUSHED FINISHES FOR PAINTS*

Shown on Coconut, available on most paints. See your designer for details.



Lakeshore
m



Nightfall
m



Timber
m

SPECIALTY FINISHES



Alpaca
m, q



Driftwood
m, q



Worn Beachglass
m, q



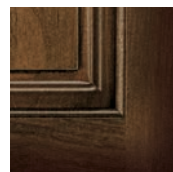
Beachglass
m, q



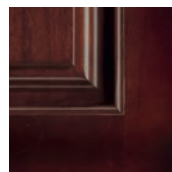
Poppyseed
m



Cigar Box
c, a, ra, q



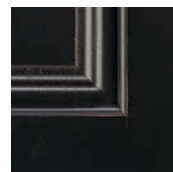
Balsamic Ombre
c, a, ra



Cordial Ombre
c, a, ra



Worn Black
m



Black Canyon
m

STAINS



Natural
m, c, a, ra, q



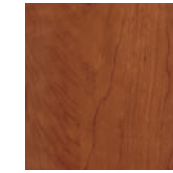
Sandpiper
m, c, a, ra, q



Single Malt
m, c, a, ra, q



Flax
m, c, a, ra, q



Sun Tea
m, c, a, ra, q



Marsala
c, a, ra



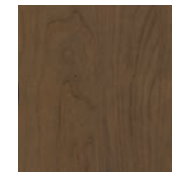
Buckskin
m, c, a, ra, q



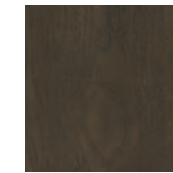
Boardwalk
m, c, a, ra, q



Quarry
c, a, ra, q



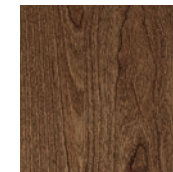
Morel
m, c, a, ra, q



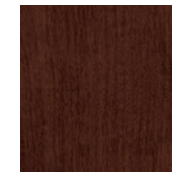
Boulder
m, c, a, ra, q



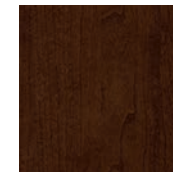
Stout
m, c, a, ra, q



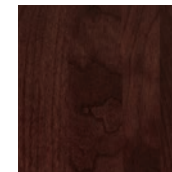
Mustang
c, a, ra



Satchel
m, c, a, ra, q

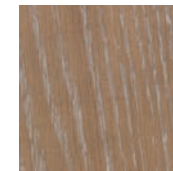


Rodeo
m, c, a, ra, q



Caribou
m, c, a, ra, q

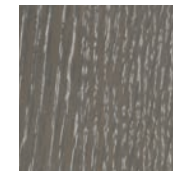
STAINS WITH CERUSED FINISHES



Buckskin Brindle
q



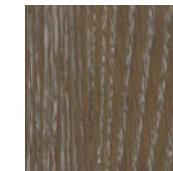
Buckskin Roan
q



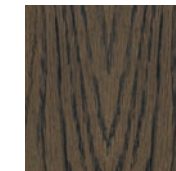
Quarry Brindle
q



Quarry Roan
q



Morel Brindle
q



Morel Roan
q

* When a paint or glazed paint is specified, the door and/or drawer front center panel may be constructed of Medium Density Fiberboard (MDF), except when Brushed Finishes, or Hewn, Extra Hewn, Timeworn or Extra Timeworn techniques are specified. MDF provides a smoother finish when painted, and is more resistant to warping, expansion and contraction.

m : maple
c : cherry

a : alder
ra : rustic alder

q : quartersawn oak

STAINS WITH FLOODED GLAZES



STAINS WITH PENNED GLAZES



SPECIALTY TECHNIQUES

HEWN AND EXTRA HEWN

Hewn is a light sanding technique that creates a subtle, aged appearance. Extra Hewn is an aggressively burnished sanding technique applied to corners and raised profiles, exposing the underlying wood.



TIMEWORN AND EXTRA TIMEWORN

Timeworn's light distressing technique mimics the look of wormholes, tiny dents and dings to replicate light signs of wear. Extra Timeworn adds more aggressive techniques like rasping and splits to emulate the wear found on a well-loved piece of furniture.



Diamond[®]

Make your mark.[™]

Express your style confidence with Diamond.[®] From the most mouth-watering colors and oh-so-stylish storage options to the well-executed basics, count on Diamond to deliver the look you want, the quality you expect, and a range of prices to satisfy, all backed by the reassurance of a limited lifetime warranty.



EDGE[™] SERIES
Premium Semi-Custom Cabinetry



DISTINCTION[™] SERIES
Semi-Custom Cabinetry



VIBE[™] SERIES
Value Semi-Custom Cabinetry